

LITTLE SUITE

I. Präludium.

1

∩ ∨ ∨ ∩ ∨ ∨ Basso.
Andante con moto. ♩ = 56.

Carl Nielsen, Op. 1.



II. Intermezzo.

Basso.

Allegro moderato. ♩ = 176.

pizz. **3**
p senza sordino

p **1** *p* **arco** *mf* *pp* *ff* *fz*

1. **2. Solb** *fz* *fz* *f*

A *f sempre*

di

mi *nu* *en*

do *f*

fz *di* *mi* *nu*

B **6** Cello *f*

pizz. *p* *f* *pp* *arco* *pizz.* *p*

Detailed description of the musical score: The score is for a Bassoon part in 3/4 time, marked 'Allegro moderato' with a tempo of 176. It begins with a triplet of eighth notes marked 'pizz.' and 'p senza sordino'. The first system includes a first ending bracket and dynamics ranging from 'p' to 'ff'. The second system features a second ending marked '2. Solb' and dynamics 'fz' and 'f'. The third system contains a section marked 'A' with the dynamic 'f sempre'. The fourth system has the word 'di' under the notes. The fifth system has 'mi nu en' under the notes. The sixth system has 'do' under the notes. The seventh system has 'di mi nu' under the notes. The eighth system includes a section marked 'B' and a '6' measure, with a 'Cello' part indicated. The final system includes dynamics 'p', 'f', 'pp', 'arco', and 'pizz.'.

arco **Basso.** **1** **3**

mf *pp* *ff*

pizz.

f *do*

1. **3** **2.** **3** **3** **3**

p *ff*

6 *mf* **Viol. I.**

pizz. *mf*

D *cre*

12 *scen* *do*

Cello *pp* *arco* *p*

E *mf*

p **3**

Basso.

pizz.
p

3

p

p

arco

mf *pp* *ff* *fz* *fz* *fz*

Solo

f

F

f sempre

di - - - mi - - -

- nu - - - en - - - do *f*

fz

G

fz *dim.* *pp*

6

Cello *pizz.* *f* *p* *arco* *f* *pizz.* *p* **8**

H

pizz. *mf*

Cello *pizz.* *p* **17**

III. Finale.

Basso.

Andante con moto. $\text{♩} = 56.$

Musical notation for the first section of the Bass part, marked "Andante con moto." The tempo is indicated as $\text{♩} = 56$. The notation is in bass clef with a key signature of one sharp (F#). It consists of four staves of music. The first staff begins with a dynamic marking of *fz* followed by *p*. The lyrics "cre - - - scen -" are written below the second staff. The third staff is marked with a dynamic of *f* and contains the lyrics "do" and "di -". The fourth staff contains the lyrics "mi -" and "nu - en - do".

Allegro con brio. $\text{♩} = 80.$

Musical notation for the second section of the Bass part, marked "Allegro con brio." The tempo is indicated as $\text{♩} = 80$. The notation is in bass clef with a key signature of two sharps (F# and C#). It consists of eight staves of music. The first staff is marked with a dynamic of *ff*. The second staff is marked with a dynamic of *p* and contains the letter "B" above it. The lyrics "di - mi - nu - en" are written below the seventh staff. The eighth staff is marked with a dynamic of *p* and contains the lyrics "do" and the letter "C" above it. The piece concludes with a first ending bracket labeled "1".

Basso.

arc.

mf *cre -*

D *scen - do ff*

p

E *pizz.* *dim..*

pp *f* *arco*

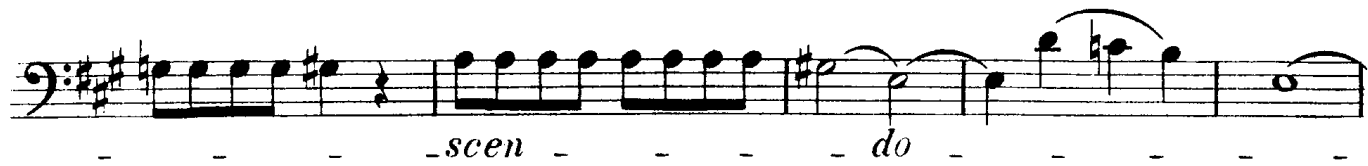
F *pizz.* *pp*

arco

cre - scen - do

f

Basso.



Basso.

pizz. *p* arco *mf*

cre - do *ff*

This section consists of five staves of music in bass clef with a key signature of two sharps (F# and C#). The first staff begins with a *pizz.* (pizzicato) instruction and a *p* (piano) dynamic. The second staff features a *mf* (mezzo-forte) dynamic and a *J* (ritardando) marking. The lyrics 'cre - do' are written below the notes. The music is characterized by a steady eighth-note rhythm with various articulations and slurs.

2 Più mosso. *dim.* *pp*

cre - do *ff*

This section consists of nine staves of music in bass clef with a key signature of two sharps. It begins with a second ending bracket labeled '2' and a *dim.* (diminuendo) instruction. The tempo is marked 'Più mosso.' (faster). The dynamic starts at *pp* (pianissimo) and later changes to *ff* (fortissimo). The lyrics 'cre - do' are written below the notes. The music features a consistent eighth-note pattern with slurs and ties.